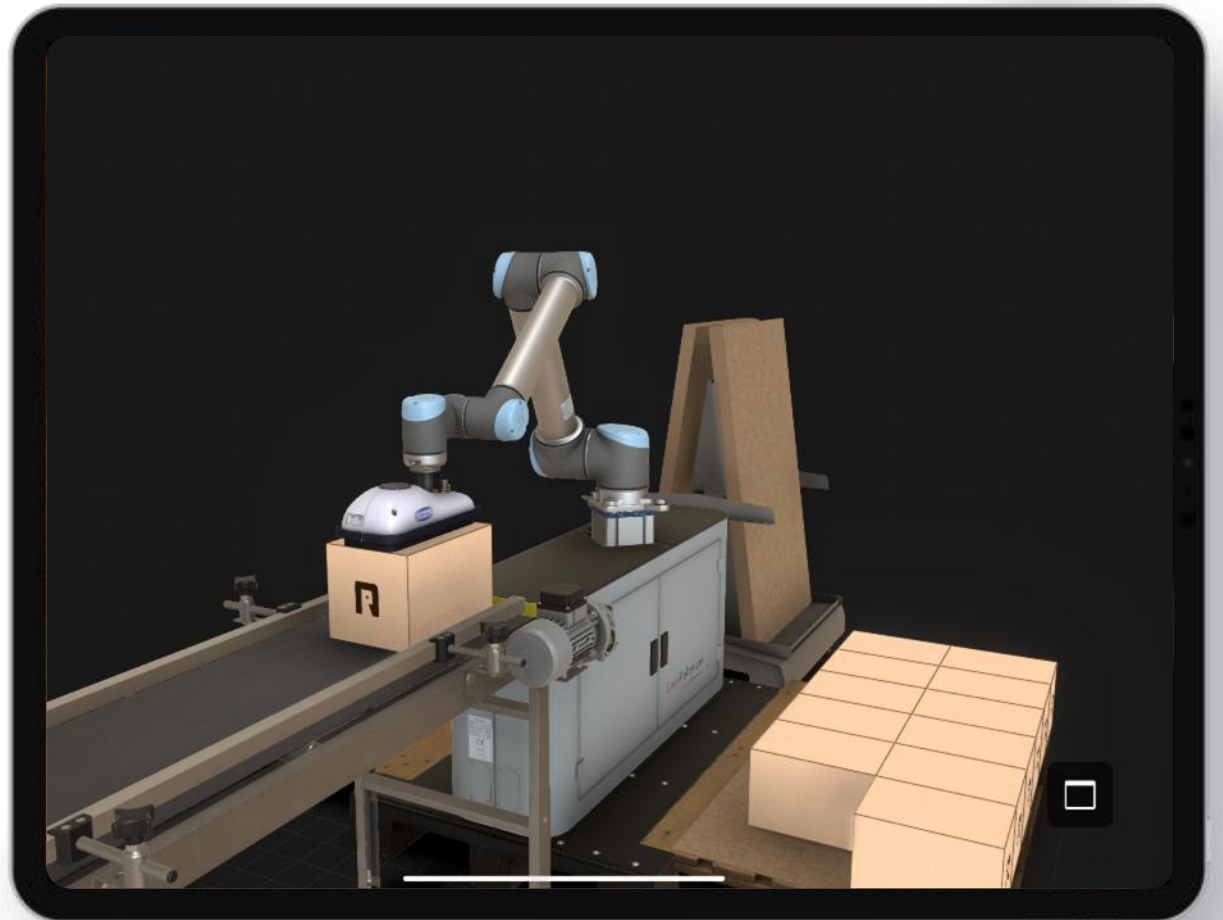
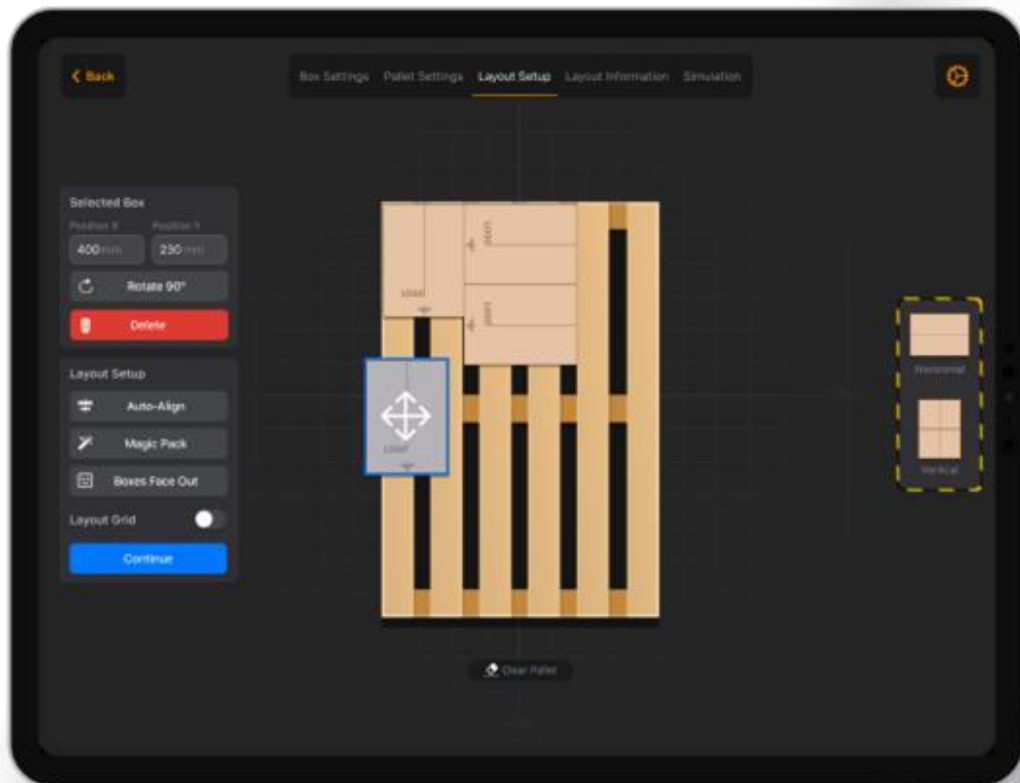


OmniPack

Increase palletizer lifetime and simplify configuration with a cutting-edge software



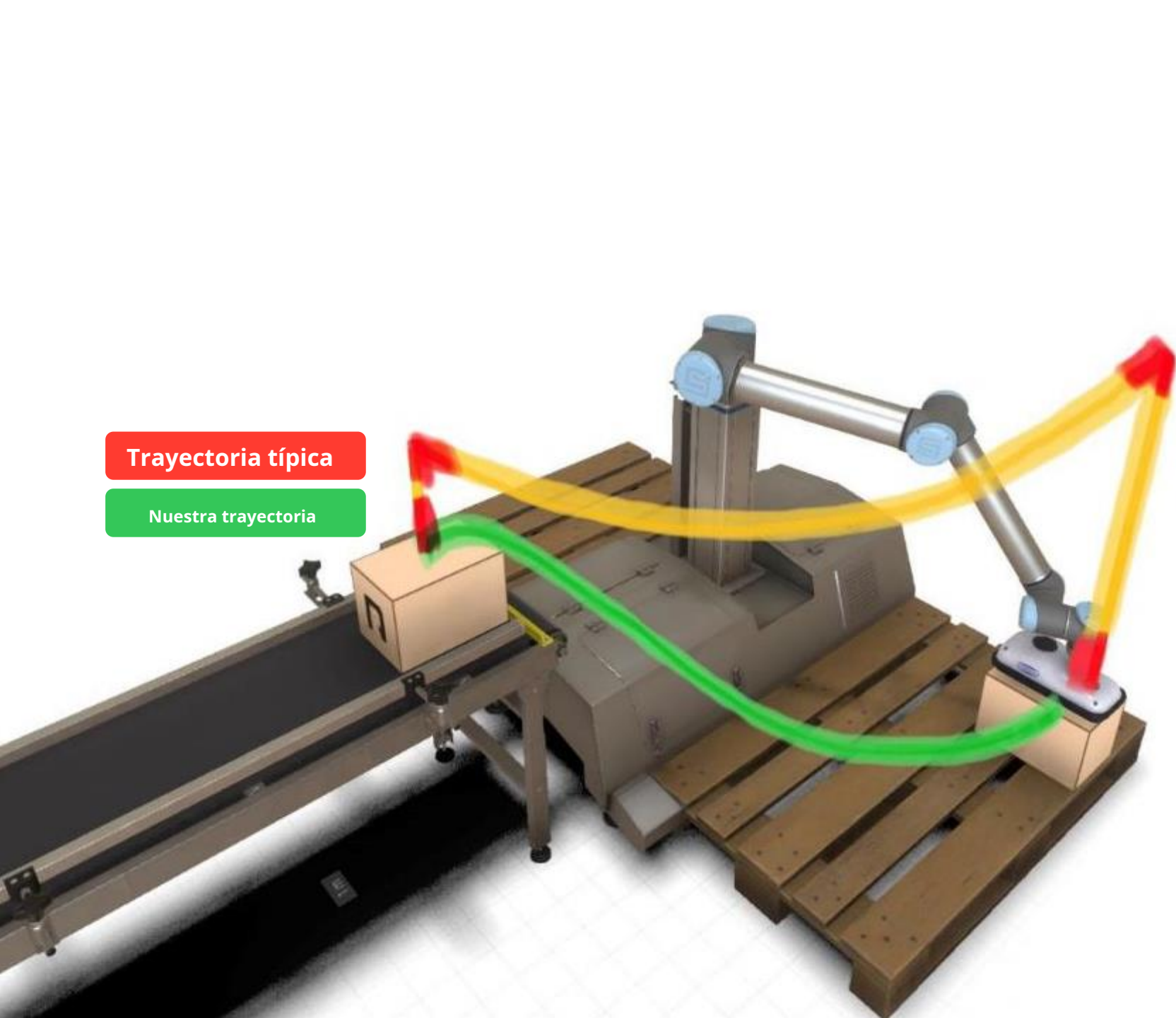


As simple as possible

Use su robot de la misma manera que usa su teléfono inteligente.

Sin código. Sin prisas. Se requiere conocimiento cero.

Solo dile al robot qué hacer y disfruta.



Trayectoria típica

Nuestra trayectoria



As efficient as possible

El algoritmo de planificación de trayectoria de última generación hace que el robot funcione más rápido e increíblemente más suave

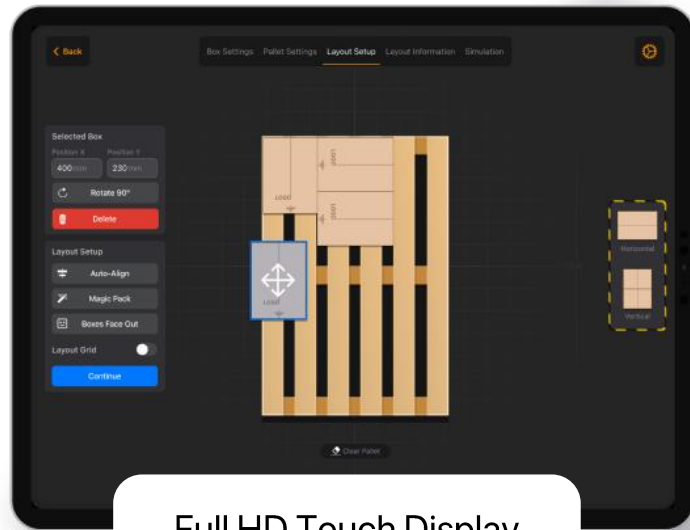


Smart and Reliable

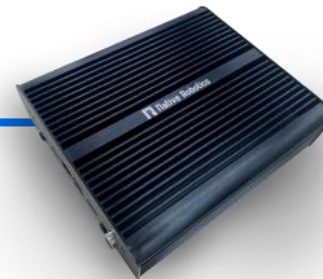
El sistema integral de manejo de errores analiza automáticamente y trata de recuperarse de cualquier problema para asegurar la producción ininterrumpida.

Plug-n-Play

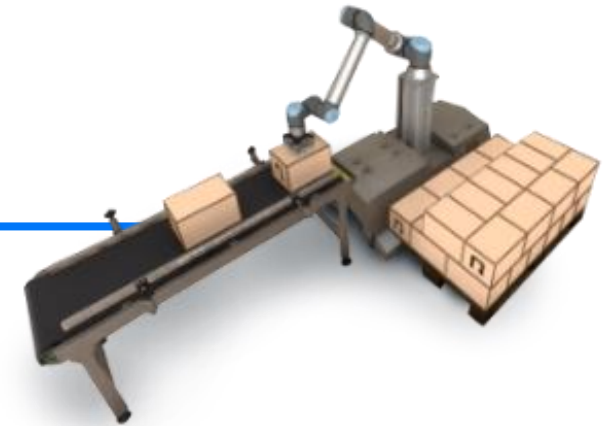
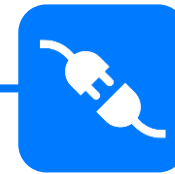
Si te estuviéramos mostrando la demostración en vivo, la habríamos terminado antes de que llegaras aquí.



Full HD Touch Display



Compact industrial PC



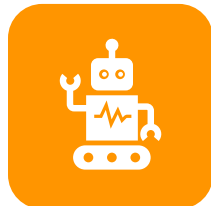
What it means for your business

50% Reducción de costes de mantenimiento y reprogramación

Easy



System set-up takes less than 10 minutes



The whole system reconfiguration in under 2 minutes

Efficient



20% shorter cycle-time



30% palletizer life-time increase

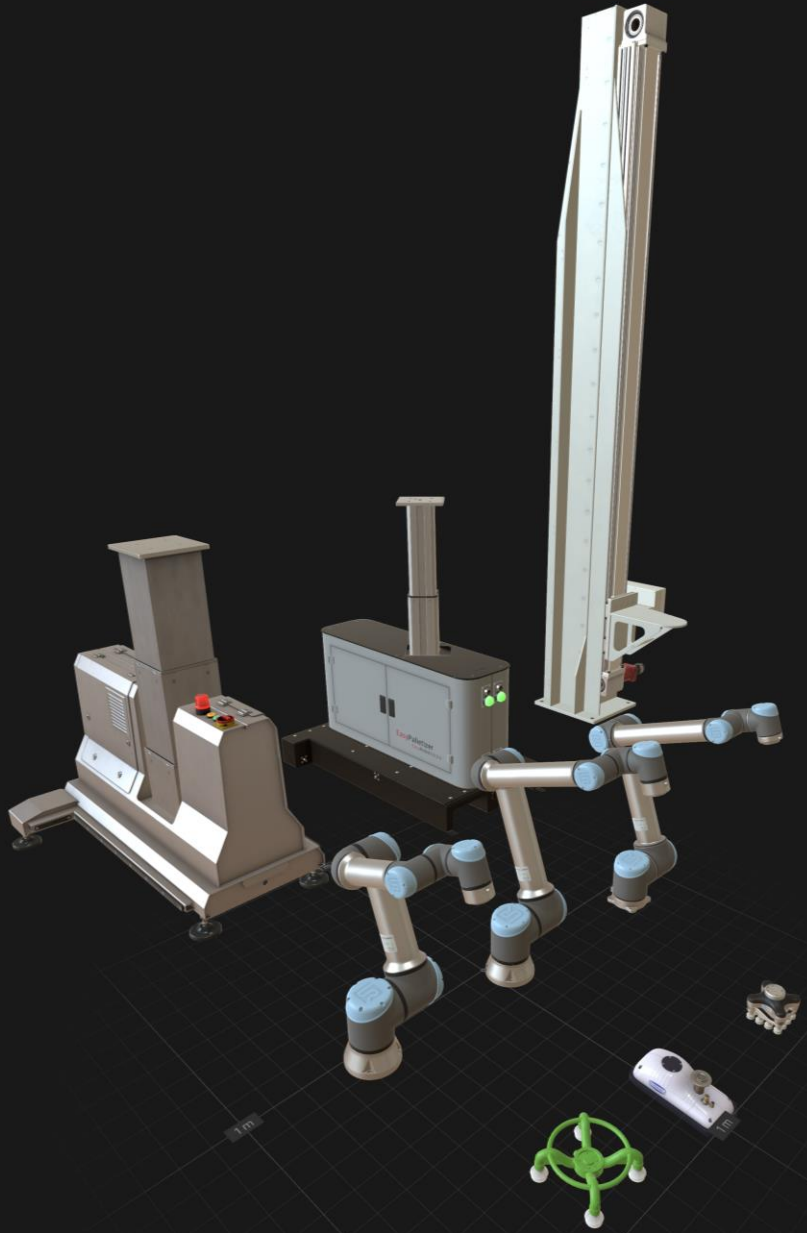
Reliable



Comprehensive error handling



Self-Recovering



We support many UR+ products



...and more

We can include your custom hardware as well

The app has advanced settings and callback functionality, supports Modbus TCP and Ethernet IP protocols as well as Omron and Siemens PLC communication

**OmniPack is certified
by the leading collaborative robots' producer**



A robotic arm is positioned on a beach, with waves crashing in the background. The arm is mounted on a wooden structure. A semi-transparent black box with the text "Thank You!" is overlaid on the image. The scene is set during sunset or sunrise, with a warm, golden light. The robotic arm is the central focus, and the beach and ocean provide a naturalistic setting for this industrial object.

Thank You!